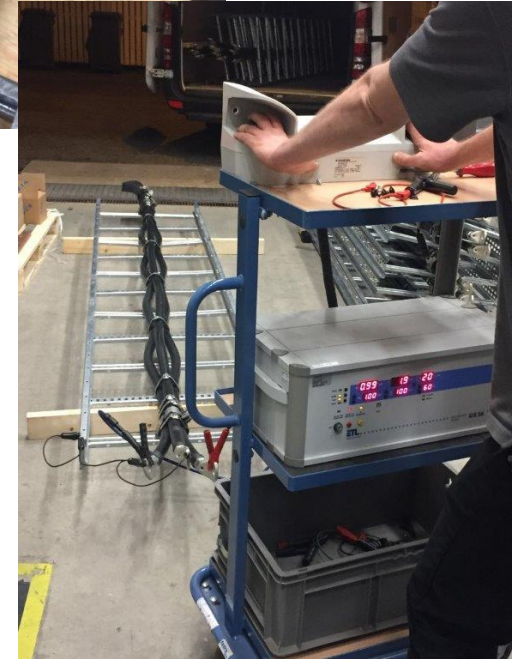


# BAND-IT™ Short Circuit Testing



# BAND-IT™ Short Circuit Testing

## Tests conducted to IEC61914:2015

### “Tests for Resistance to Electromechanical Force” section 6.4.3 and 6.4.4.

BAND-FAST™ Clamp Ref	Band Ref	Buckle / Clip Ref	Description	Width	Single or Double Wrap	Spacing between clamps	Cat 1 (Clause 9.5.2*) Pass level kA peak	Test Report # (Test Video #)	Cat 2 (Clause 9.5.3**) Pass level kA peak	Test Report # (Test Video #)
LFAC-F1015M***-A900	AE435	AE455	PPA Coated	5/8"	Single	300mm (12")	50.8 kA	PDL-17.003.2 (4)	40.9 kA	PLD-17.003.1 (2 & 3)
LFAC-F1015M***-A900	AE435	LE155	PPA Coated	5/8"	Double	300mm (12")			76.3 kA	PLD-17.003.3 (6 & 7)
LFEC-F1030M***	C405	C455	Uncoated with channel	5/8"	Double	300mm (12")			110 kA	PLD-17.003.4 (13 & 14)
LFEC-F1230M***	C406	C456	Uncoated with channel	¾"	Double	300mm (12")	120 kA	PLD-17.003.5 (17)		
LFAC-F0815M***-A900	AE434	AE454	PPA Coated	½"	Double	600mm (24")			45.1 kA	PLD-17.003.9 (36 & 37)
LFAC-F1015M***-A900	AE435	AE455	PPA Coated	5/8"	Single	600mm (24")			45.5 kA	PLD-17.003.6 (26 & 27)
LFAC-F1015M***-A900	AE435	LE155	PPA Coated	5/8"	Double	600mm (24")			70.1 kA	PLD-17.003.7 (32 & 33)
LFEC-F1030M***	C405	C455	Uncoated with channel	5/8"	Double	600mm (24")			112 kA	PLD-17.003.8 (44 & 45)

\* Clause 9.5.2 = One shock & visual inspection

\*\* Clause 9.5.3 = Two shocks, visual inspection, water spray and electrical continuity test