



## BAND-IT® Bolt Clamp

*Low cost, high quality pole attachment solution*

The BAND-IT® bolt clamp is great for pole attachment applications such as hanging utility boxes, transformers and other fixture mounting. This bolt conveniently adjusts to the size you need and does not require a special tool to install or adjust.

### Features and Benefits

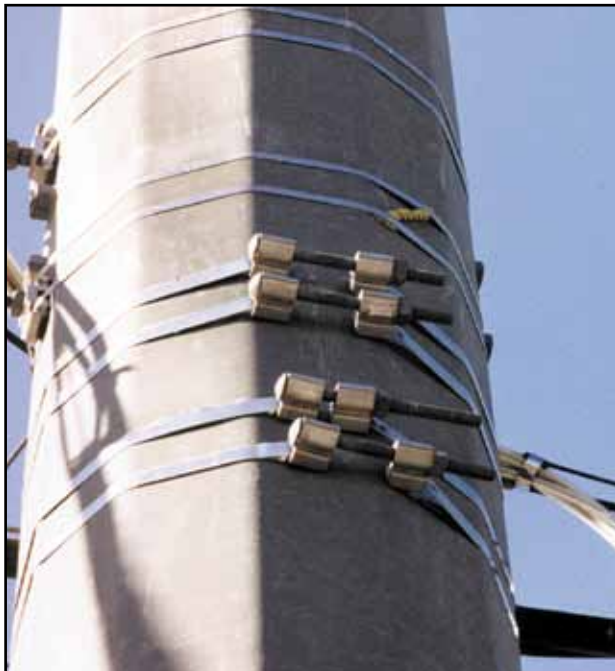
- Easy preparation for installers
- Easy to apply without the need for a special tool, can be installed with just a wrench or ratchet
- Can be adjusted and reused or for permanent attachment, use in conjunction with BAND-IT® mounting plates
- Available in two sizes: the 3/4" for lighter duty and the 1-1/4" for heavy duty
- Non-corrosive aluminum composition and Dacromet® coating



**BAND-IT® Bolt Clamp - 3/4"**



**BAND-IT® Bolt Clamp - 1-1/4"**



### Use with BAND-IT® Band and Giant Band

Pair the BAND-IT® bolt clamp with one of our banding products.

- The 3/4" BAND-IT® bolt clamp works with the 3/4" width 201 stainless steel BAND-IT® Band or 3/4" Giant Band
- The 1 1/4" BAND-IT® bolt clamp can be paired with the 3/4" to 1 1/4" width Giant Band for the greatest strength



**201 Stainless Steel BAND-IT® Band in Box (C20699) or Tote (C206R9)**



**Giant Band 3/4" (G43099), 1" (G43199) and 1 1/4" (G43299)**

Part #	Description	Package Quantity	Package Weight	
			Lbs	Kg
D50089	Bolt clamp. Includes a 3/8 - 16 x 6.0" carriage bolt. Slot will accommodate from 1/2" to 3/4" width BAND-IT® Band or 3/4" Giant Band.	50/Box	24	11
D50489	Bolt clamp. Includes a 5/8 - 11 x 8.0" carriage bolt. Slot will accommodate from 3/4" to 1 1/4" width Giant Band.	25/Box	33	15